



# MONTHLY MEMBERSHIP PROGRESS REPORT

District 42

Results as of: 06/30/2019

GMT: MAHESH CHITNIS

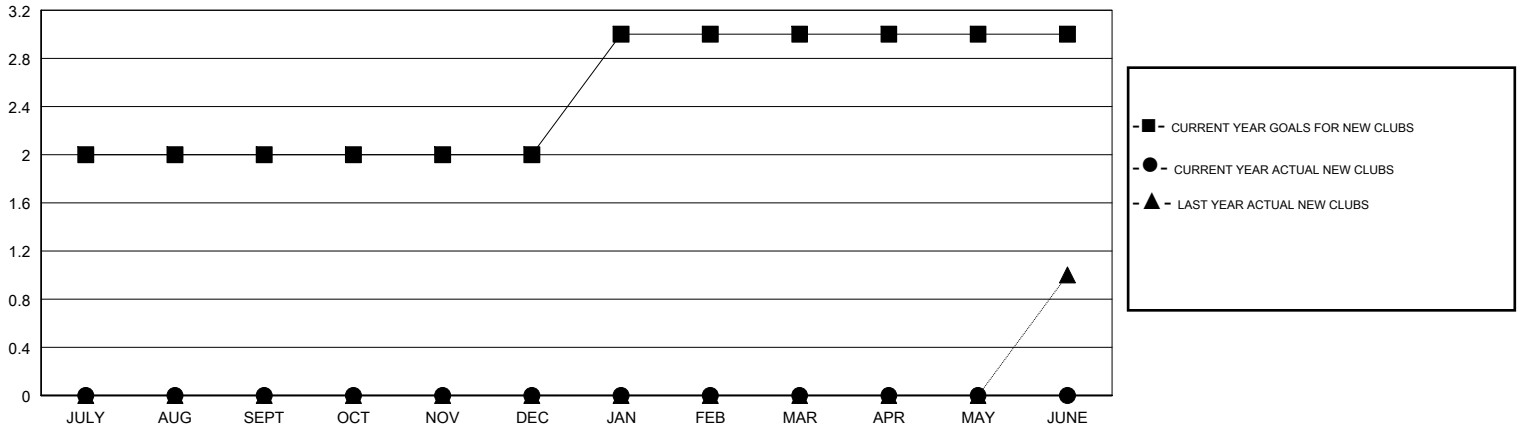
LOCATION RHODE ISLAND

GMT CA

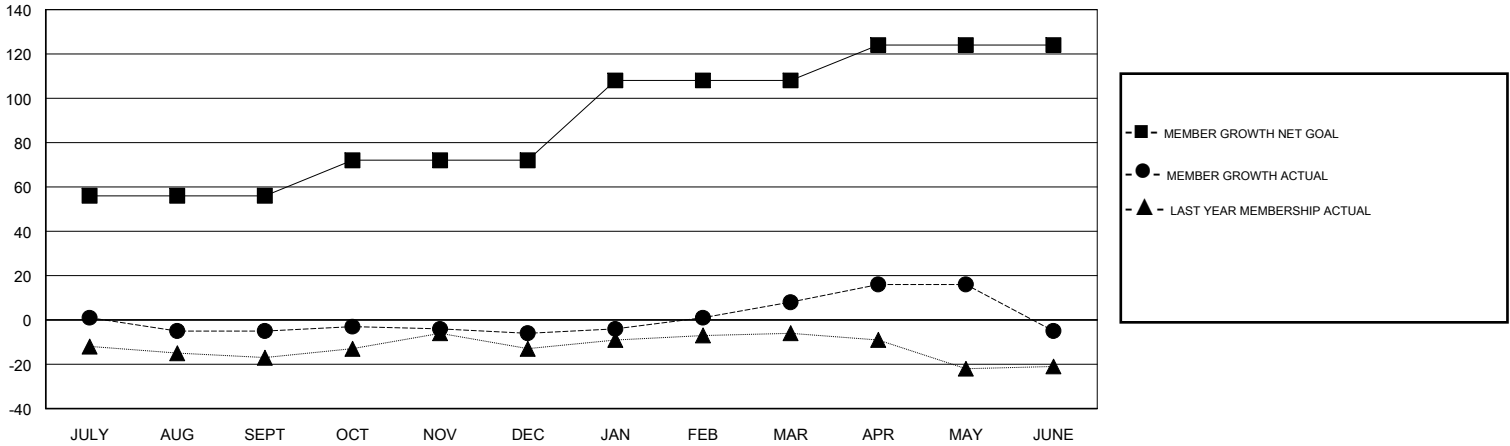
Clubs			
RESULTS FOR 2018-2019			
QUARTER	NEW CLUB GOAL	NEW CLUBS	DROPPED CLUBS
JULY/AUG/SEPT	2	0	0
OCT/NOV/DEC	0	0	0
JAN/FEB/MAR	1	0	0
APR/MAY/JUNE	0	0	0

Members			
RESULTS FOR 2018-2019			
QUARTER	MEMBER GROWTH NET GOAL	MEMBER GROWTH ACTUAL	DROPPED MEMBERS ACTUAL (including transfers)
JULY/AUG/SEPT	56	10	14
OCT/NOV/DEC	16	20	20
JAN/FEB/MAR	36	26	12
APR/MAY/JUNE	16	27	39

GOALS AND ACTUAL NEW CLUBS CUMULATIVE



GOALS AND ACTUAL MEMBERS CUMULATIVE



DROPPED CLUBS: 0	22 CLUBS OF 30 ADDED 1 OR MORE NEW MEMBERS	<u>GENDER DISTRIBUTION</u>	
DROPPED MEMBERS		MALE	800 (70.92%)
DECEASED	10	FEMALE	328 (29.08%)
CLUB CANCELLED	0	Women Percentage Fiscal Year Goal: 30%	
OTHER	75	<a href="#">CLICK HERE FOR CUMULATIVE MEMBERSHIP DATA</a>	
TOTAL	85	TOTAL FAMILY UNIT MEMBERS	136
		FAMILY MEMBERS PAYING HALF DUES	70